

Archaeological Research Services Ltd

Photograph Courtesy of Mark Holloway

Consultancy

Environmental Impact Assessment

Field Evaluation and Excavation

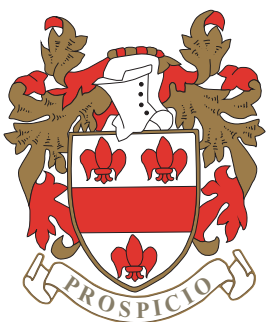
Historic Building Recording

Geophysical Survey

Site and Landscape Survey

Finds and Environmental Analysis

Interpretation, Design and Display



Archaeological Research
Services Ltd

Supporting British Business



Archaeological Research
Services Ltd

About Us

Established in 1999, Archaeological Research Services Ltd is an experienced and well-regarded practice providing a full range of archaeological and heritage services across the commercial, public and third sectors. Whether you are establishing a quarry, building a housing estate, power station, road or other development, we offer a complete end-to-end archaeological and heritage service. From preliminary advice and assessments to fieldwork, post excavation analysis, displays and dissemination, our approach is committed to providing successful, high-quality, cost-effective outcomes by way of solutions tailored to your individual needs.

Providing to a wide range of sectors

- Urban Regeneration
- Mineral Extraction
- Energy
- Utilities
- Transport
- Housing
- Historic Buildings
- Local Authorities
- English Heritage
- Heritage Lottery Fund
- Community Archaeology
- Charities

How to Contact Us

We are here to support your needs and add value to your organisation so please do not hesitate to contact us. We are always pleased to hear from new or existing customers.

For a no obligation phone call to discuss your requirements with one of our expert senior staff, please contact us initially at our head office on the number below.

Angel House
Portland Square
Bakewell
Derbyshire
DE45 1HB

Tel: 01629 814540

PACK CONTENTS

The following list itemises the information sheets contained in this pack. The range of projects we work on is exhaustive and therefore the information sheets only give a flavour of the different types of projects we routinely deliver. If you have a project in mind then please do not hesitate to follow-up by speaking to one of our friendly experts for free, no-obligation advice.

- Consultancy and Planning
- Archaeological Investigations
- Specialist Services
- Aerial Photograph Analysis and Mapping
- Geophysical Survey
- Historic Buildings
- Industrial Archaeology
- Design and Interpretation
- Minerals Development
- Energy
- Renewable Energy
- Urban Regeneration
- Housing Development
- Construction
- Roads and Infrastructure
- Waterways
- Charities
- Community Archaeology



Archaeological Research Services Ltd

Web: www.archaeologicalresearchservices.com
Email: enquiries@archaeologicalresearchservices.com
Tel: 01629 814540



CONSULTANCY AND PLANNING

Archaeology and heritage are key considerations within the National Planning Policy Framework and therefore sound advice from the outset of any project will help off-set potential risk, cost and delay. As a highly regarded and experienced practice Archaeological Research Services Ltd regularly provide:

- Planning advice
- Scoping studies
- Heritage appraisals
- Conservation statements
- Desk-based assessments
- Setting studies
- Environmental Statement chapters
- Historic building studies

Having accumulated a wide variety of sector specialisms and a wealth of expertise in the use of geographical information systems we bring a crisp technical edge to our work that assists in developing clear and robust evidence in support of planning applications. From single building plots through to landscape-scale developments our consultancy and planning team provides competitively-priced, high-quality services for all types and scales of development. Being business people ourselves we routinely identify how the historic environment can be used to add value to a development and add to its sustainability, thereby helping our clients to realise opportunities that arise.

Manchester
Piccadilly Station:
Showing a client a
well-preserved
cobbled surface and
associated industrial
remains and housing
prior to demolition



Archaeological Research Services Ltd

Web: www.archaeologicalresearchservices.com
Email: enquiries@archaeologicalresearchservices.com
Tel: 01629 814540



ARCHAEOLOGICAL INVESTIGATIONS

Archaeological Research Services Ltd provide a complete archaeological field investigation service. From routine watching briefs to complex, large-scale excavations we have the experience and expertise to deliver all types of fieldwork. By investing in our staff we have developed an efficient and experienced team with the ability to deploy at short notice. With offices around the country we can reduce travel and accommodation costs to various UK locations and we employ locally-based staff on projects wherever possible.

We have been involved in a range of flagship projects throughout Britain including excavations of Mesolithic houses, Neolithic settlements, Bronze Age farmsteads, Iron Age hillforts, a Roman villa, Anglo-Saxon cross shaft, medieval villages, post-medieval pottery kilns, industrial mills and steelworks amongst many other sites.

The typical range of fieldwork activities that we routinely undertake include:

- Field evaluation
- Fieldwalking
- Walkover survey
- Geophysical survey
- Analytical earthwork survey
- Building surveys
- Photographic survey
- Watching briefs
- Strip, map and sample
- Excavation
- Sediment coring

In addition to the field investigations we also provide a full post-excavation service including our online publication series 'Archaeological Research Papers' which allows for fast, efficient and cost-effective publication of results to the widest possible audience.

Lanton Quarry:
After a programme of fieldwalking and test pits this 40ha site was stripped in phases as part of a strip, map and sample investigation and the remains of Neolithic, Bronze Age and Anglo-Saxon settlements were recorded.



Archaeological Research Services Ltd

Web: www.archaeologicalresearchservices.com
Email: enquiries@archaeologicalresearchservices.com
Tel: 01629 814540



SPECIALIST SERVICES

Following the successful conclusion of archaeological fieldwork there is sometimes a requirement for remains to be assessed, analysed and their significance disseminated to the public. Archaeological Research Services Ltd has a dedicated in-house team of specialists covering all the typical specialist services. This means we can provide our clients with a quick turnaround and more competitive rates as it reduces reliance on external sub-contracted specialists. We are also able to pass on savings to our clients through our specially negotiated rates from a leading radiocarbon dating laboratory.

We provide the following post-excavation specialist services in-house:

- Environmental assessment
- Chipped and coarse stone artefacts
- Ceramics
- Human bone
- Animal bone
- Post-medieval and later small finds
- Sediment coring

In addition to post-excavation specialisms we also provide a wide range of other specialist services including IT applications, publication in a variety of formats, design and interpretation, reconstructions, heritage trails and installations.

Ancient Farming:
Remains of early cereal grains from a Late Bronze Age house are identified testifying to the growing of barley, emmer wheat and oats at this time.



Archaeological Research Services Ltd

Web: www.archaeologicalresearchservices.com
Email: enquiries@archaeologicalresearchservices.com
Tel: 01629 814540



AERIAL PHOTOGRAPH ANALYSIS AND MAPPING

The analysis and interpretation of aerial photography has provided the most effective tool for identifying buried archaeological sites throughout the UK accounting for the discovery of tens of thousands of sites. It is also useful for obtaining a wider view of a site and informing on its setting.

The analysis of aerial photographs can help in setting out the different options for a development site as well as yielding substantial new information which can prevent cost and delay further down the line. Archaeological Research Services Ltd is one of the few companies in the UK employing a permanent team of specialist archaeological aerial photograph interpreters who work to English Heritage's 'National Mapping Programme' standards. With years of experience to their credit our team regularly undertakes aerial photograph analysis and mapping for minerals, roads, pipeline, housing and windfarm developments, as well as for huge blocks of landscapes covering hundreds of square kilometres for local authorities and English Heritage. The mapped information is produced in digital format and is routinely transferred into a GIS to support desk-based assessments and Environmental Impact Assessments.

Our team has developed specialist knowledge of river valleys, uplands and coastlines having mapped very large tracts of land across diverse areas of the UK. Members of the team regularly lecture at national conferences and contribute to publications.

Roundhouse Quarry:
The remains of an Iron Age farming settlement and field system were revealed from the air and subsequently excavated (see right) in advance of mineral extraction.



Archaeological Research Services Ltd

Web: www.archaeologicalresearchservices.com
Email: enquiries@archaeologicalresearchservices.com
Tel: 01629 814540



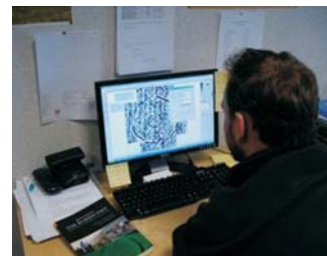
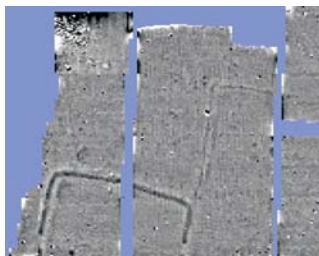
GEOPHYSICAL SURVEY

Our well-established Geophysical Survey service provides a cost-effective non-intrusive method of archaeological and geological prospection, particularly useful for evaluating large development areas and assessing and minimising potential risks and impacts. We regularly deploy this specialist technique in support of planning applications, typically as part of pre-determination evaluation works, as an important aid in the detection of sub-surface archaeological remains. We can cover large areas quickly having developed highly efficient field methods.

Geophysical survey can work with varying degrees of success depending on the type of geology and soil-moisture conditions present. We therefore use this technique in a targeted way, and usually in combination with other techniques, such as fieldwalking and evaluation trenching to minimise the possibility of unexpected surprises once groundworks begin.

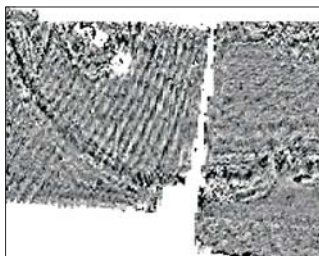
The Archaeological Research Services Ltd Geophysical Survey Team can undertake a range of geophysical surveys employing techniques appropriate to the geological conditions and needs of the client. The majority of the surveys undertaken tend to be gradiometer surveys and we use the latest Bartington Grad 601-2 gradiometer which allows for the most efficient and rapid data collection in the field and easy download and processing of data. To maximise our ability to detect buried remains we employ a close-spaced data sample interval of 0.125m so there is less chance of features going undetected. Our team has a wealth of experience working across different geologies throughout the UK. Having our geophysical service in-house means that results are rapidly processed and integrated into planning documents and project mapping and this efficient information exchange not only saves time and money, but also immediately informs project managers of results which can assist in on-going planning negotiations.

New Discovery:
With the ability to
'see below the
ground' we have
discovered many
previously unknown
sites including this
rectangular Roman
farmstead (see right)
on the outskirts of
Sheffield.



Archaeological Research Services Ltd

Web: www.archaeologicalresearchservices.com
Email: enquiries@archaeologicalresearchservices.com
Tel: 01629 814540



HISTORIC BUILDINGS

Developing and renovating historic buildings can be a challenging task and Archaeological Research Services Ltd specialist Historic Buildings Team provide a comprehensive service for carrying out all necessary surveys and advising on the most appropriate options to best manage risk and cost. We always look to identify opportunities by which the historic character of a structure can be used to add value to a development, thereby helping to defray cost and increase the value of a site. We also identify any potential for grant aid when dealing with 'Listed' or 'Scheduled' buildings and provide advice and assistance with grant aid applications.

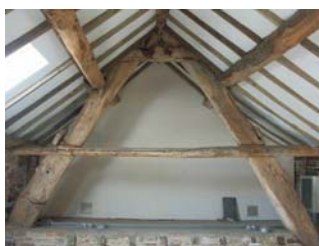
Our dedicated team includes historic building specialists, survey specialists, consultants and a construction engineer who are experienced in dealing with medieval, post-medieval, industrial and more recent historic buildings and structures. We have also developed the use of photogrammetry to record and display free-standing structures and our team is highly competent in the use of CAD and GIS computer packages for storing, articulating and presenting information. We also offer laser scanning surveys which can sometimes be a more economic and accurate way of recording large and complex structures.

**Haarlem Mill
Wirksworth:**
This mill complex
dates from the
Industrial Revolution
and proved a
successful
redevelopment that
brought a neglected
historic building
back into use.



Archaeological Research Services Ltd

Web: www.archaeologicalresearchservices.com
Email: enquiries@archaeologicalresearchservices.com
Tel: 01629 814540



INDUSTRIAL ARCHAEOLOGY

In recent years, the pace of industrial building redevelopment has increased leading to a wide range of new and exciting uses for these structures. With Britain being the crucible of the Industrial Revolution there is a certain kudos for those businesses and homeowners occupying what are often grand old buildings. Archaeological Research Services Ltd has a dedicated team of industrial archaeology specialists with expert knowledge, not only of the structures themselves but also of the processes that determined their form. We provide a complete archaeological service for dealing with industrial heritage sites that includes research, survey, excavation and conservation. We also have an in-house Design and Interpretation Team on hand to produce plaques, memorials, information panels, exhibitions and displays for industrial heritage sites.

Our specialist team typically undertakes landscape surveys of historic industrial workings, detailed building surveys, photographic surveys, analysis of early maps and aerial photographs as well as excavation of sites and analysis of finds and industrial residues. We are experienced in working in Conservation Areas as well as on Listed Buildings, Scheduled Monuments and World Heritage sites. Whether it is steel works, glass works, manufacturing sites, cotton mills, early pottery kilns, colliery sites or lead mining remains we offer a wealth of skills for dealing with our industrial heritage.

Trinity Works:
Excavation of a
Victorian cutlery
works at Furnival
Square in the heart
of Sheffield prior
to the construction
of a hotel.



Archaeological Research Services Ltd

Web: www.archaeologicalresearchservices.com
Email: enquiries@archaeologicalresearchservices.com
Tel: 01629 814540



DESIGN AND INTERPRETATION

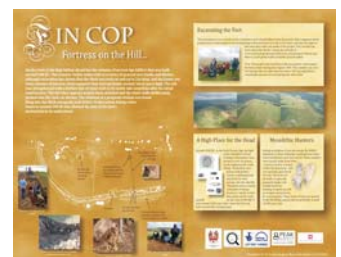
One of the key outputs of archaeological and heritage work is the dissemination of information to a wide range of audiences. In addition to academic publications this is typically achieved through the design and provision of interpretive materials to provide information on a given site or landscape, promote interest and to provide enjoyment for visitors and local residents.

Archaeological Research Services Ltd has years of experience in the dissemination of information to the public. Our in-house design and interpretation team provide a wide range of high-quality solutions tailored to your requirements. We have expertise in designing and delivering:

- Heritage trails and displays
- Interior and exterior information panels
- Leaflets
- Brochures
- Academic and popular books
- Websites
- Podcasts
- School packs
- On-line publications
- Lectures
- Workshops
- Training seminars
- Attracting television and media coverage

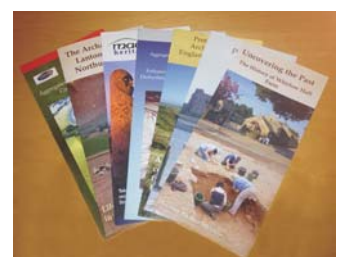
Over the years we have devised materials for all kinds of historic sites from Britain's 'oldest house' to giant relics of the industrial revolution. Our wide range of contacts means we have a pool of artists, television companies and media contacts to draw upon should the project require regional, national or international promotion.

Maelmin Heritage Trail:
The reconstructed 'Dark Age' house built by ARS Ltd based on remains excavated at Cheviot Quarry where we undertook large-scale excavations.



Archaeological Research Services Ltd

Web: www.archaeologicalresearchservices.com
Email: enquiries@archaeologicalresearchservices.com
Tel: 01629 814540

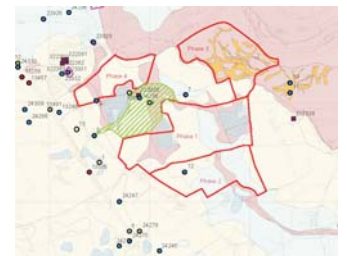


MINERALS DEVELOPMENT

Archaeological Research Services Ltd is one of the leading providers of historic environment consultancy and archaeological services to the minerals industry. Driven by expertise and innovation we utilise existing knowledge, archaeological and geomorphological landform associations and sensitivity mapping to produce targeted and cost-effective programmes of pre-determination evaluation in order to quantify the archaeology and assess risk and costs. The resultant evidence base is used to carefully craft any necessary post-permission mitigation work and, importantly, explore ways in which value and CSR outcomes can be included within the development and whether there is additional external funding available to support such work.

Archaeological Research Services Ltd was the lead consultant employed to bring together the national guidance for archaeology and mineral extraction, a document endorsed by the minerals industry and archaeology sector after its 2009 Westminster launch. We regularly work throughout the UK on aggregate, hard rock and coal extraction projects whether as part of quarry extensions or a new operation. Our specialist consultants have developed in-depth experience working with the minerals industry and our consultancy services cover all aspects of archaeological and heritage-related work associated with minerals developments. As Associate Members of the Mineral Products Association and the British Aggregates Association we work closely with the industry and actively contribute to planning matters.

Some of Britain's earliest pottery: Excavation of broken pottery from an Early Neolithic settlement discovered on a Northumberland quarry - these important finds were featured live on BBC national news.



Archaeological Research Services Ltd

Web: www.archaeologicalresearchservices.com
Email: enquiries@archaeologicalresearchservices.com
Tel: 01629 814540



ENERGY

Heritage and archaeology can play a significant role in the determination of planning applications for the energy sector.

With early engagement we can provide high-quality advice and cost-effective pre-determination fieldwork and post-permission mitigation. Archaeological Research Services Ltd regularly provides a complete consultancy and fieldwork contracting service to clients in the energy industry as well as for renewables. Understanding the particular issues which can arise through energy developments and the need to generate positive relations with nearby residents and communities is an important feature of our approach. We frequently work with clients to identify ways in which the historic environment can be used to help foster positive sustainable outcomes both for the development, local communities and the heritage assets themselves.

In the shadow of a coal-fired power station:
Excavation of prehistoric and Roman period remains in advance of construction for energy infrastructure.



Archaeological Research Services Ltd

Web: www.archaeologicalresearchservices.com
Email: enquiries@archaeologicalresearchservices.com
Tel: 01629 814540



RENEWABLE ENERGY

Archaeological Research Services Ltd is committed to delivering heritage solutions for the renewable energy sector and we ourselves are shareholders in a community renewable energy scheme. We support renewable developments through high-quality planning advice, targeted and efficient fieldwork and rapid analysis and dissemination. We aim to deliver a proportionate approach to pre-determination archaeological evaluation through well-researched assessment and a targeted approach, and thereby deliver a robust case for our clients to secure positive outcomes including, if necessary, at appeal.

With longstanding experience of working with wind, water and solar projects of all scales, we can provide the working expertise necessary to navigate a development through the National Planning Policy Framework. Furthermore our dedicated Consultancy Team have in-depth geographical information system (GIS) skills to produce maps, viewsheds and zone of theoretical visibility models to provide robust setting studies in support of planning applications.

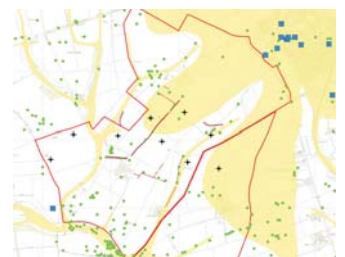
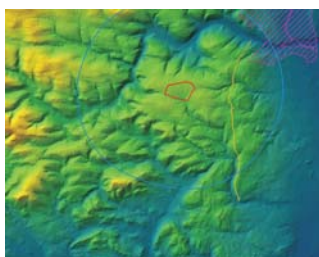
We understand that renewables development can sometimes be an emotive issue but, through proactive engagement with heritage issues, we offer outcomes which are genuinely capable of engaging with, and building rapport with, local communities and which can also assist projects demonstrate environmental and social sustainability.

New Mills Hydro:
Within the dramatic gorge at New Mills ARS Ltd undertook a scheme of heritage recording in advance of the installation of an 'archimedes screw' (in green to left of weir) which provides energy for the local community.



Archaeological Research Services Ltd

Web: www.archaeologicalresearchservices.com
Email: enquiries@archaeologicalresearchservices.com
Tel: 01629 814540



URBAN REGENERATION

British towns and cities are often defined by their heritage which lends them a distinctive character. In some cases heritage can be used to successfully drive urban regeneration. Archaeological Research Services Ltd regularly contributes to urban development schemes, whether commercial, residential, leisure, mixed use, public realm or infrastructure, and has earned a strong reputation for working with consultants and contractors to deliver within their work schedules and cost constraints. Ranging from sports stadiums and superstores to theatres and hotels, we have worked on flagship projects throughout the country. Our field archaeology teams are experienced in working in urban settings and dealing with complex stratigraphy and the health and safety risks associated with urban construction.

Where possible we identify how the historic environment may add value to an urban regeneration programme. We are used to working closely with architects, town planners, developers and local authorities and our culture of innovation means that we always look to create further regeneration benefits through the opportunities provided by archaeological discoveries. Understanding the full significance of historic structures, the events that took place there and the people involved can all help enrich our urban places and people's experience of them.

Tudor Square:
Recording
industrial period
archaeological
remains outside
the Crucible
Theatre, Sheffield,
as part of the
'Heart of the City'
redevelopment
works.



Archaeological Research Services Ltd

Web: www.archaeologicalresearchservices.com
Email: enquiries@archaeologicalresearchservices.com
Tel: 01629 814540



HOUSING DEVELOPMENT

Britain has been inhabited continuously for over twelve thousand years, and the places that we want to live in today have frequently been the choice locations for people in the past. This is one of the main reasons why the historic environment is sometimes a key consideration when planning and constructing Britain's much-needed housing developments.

Archaeological Research Services Ltd has a wealth of experience in negotiating common sense, proportionate, and targeted approaches to archaeological evaluation and mitigation works for housing development. Backed up by our highly-efficient and experienced field teams we provide a complete and integrated service for dealing with housing developments of all types and scales across the UK.

We work with many of the UK's leading house builders and are geared to providing project delivery within the tight timescales and work windows in which the archaeological works must be completed. We routinely identify opportunities by which the historic environment aspects of a development can be used to bring benefits, whether from positive advertising by way of media articles on archaeological discoveries, or by helping to identify and badge buildings as heritage properties, thereby raising their marketability and value.

Oakerthorpe:
Archaeological
excavations
underway prior
to a housing
development in
semi-rural
Derbyshire



Archaeological Research Services Ltd

Web: www.archaeologicalresearchservices.com
Email: enquiries@archaeologicalresearchservices.com
Tel: 01629 814540



CONSTRUCTION

Archaeological Research Services Ltd have longstanding experience in working closely with construction partners to deliver successful projects throughout the UK. Whether the development is concerned with infrastructure, residential, mixed-use, offices, new schools, public realm, regeneration or any other form of building work, we have a fully-skilled team that can provide a complete end-to-end service, from consultancy through to excavation, analysis and dissemination. Having specialists in all the common heritage disciplines in-house means we can meet deadlines and keep costs down, whilst also providing a smooth and joined-up solution. Being business people ourselves we are keen to identify opportunities for our clients to add value to their project as not only does 'heritage' sell, but it can also form a story of interest to gain free publicity and thus indirect advertising. We also retain a clear focus on how heritage matters can be dealt with in such a way that they add to the sustainability of a development and help clear the pathway for planning approval.

University
Technical College:
Recording the
archaeology before
the laying of
foundations at the
Sheffield UTC



Archaeological Research Services Ltd

Web: www.archaeologicalresearchservices.com
Email: enquiries@archaeologicalresearchservices.com
Tel: 01629 814540



ROADS AND INFRASTRUCTURE

Archaeological Research Services Ltd provides an end-to-end service for all infrastructure development. With our specialist in-house teams of Consultants, GIS Specialists, Aerial Photograph Interpreters, Geophysicists and Archaeological Field Archaeologists we have the full range of skills and expertise to deal with large-scale projects that extend over many kilometres and different local authorities.

We regularly work with national developers and contractors, on new pipelines, energy cables, mains, utilities and roads throughout the UK. Whether working via a consultancy or direct with the client we are used to working as part of a multi-disciplinary team, communicating well and delivering to timetable and budget. Having a national network of offices and staff we combine local knowledge with national expertise.

With a substantial core of permanent staff and a well-established pool of additional field archaeologists we can call upon, we rapidly expand to deliver large-scale projects and quickly decrease on completion, thereby reducing risk and ensuring we operate a resilient business model. We have built our reputation for reliability and trust on a sound business model and this helps us deliver greater certainty and trust with our clients while also minimising risks.

Gas Pipeline in
Cheshire:
Archaeological
monitoring after
topsoil stripping as
part of a project
to lay a new gas
pipeline on the
outskirts of Crewe.



Archaeological Research Services Ltd

Web: www.archaeologicalresearchservices.com
Email: enquiries@archaeologicalresearchservices.com
Tel: 01629 814540



WATERWAYS

The network of waterways in Britain is both a significant part of our national heritage and an important part of our modern economy. Today waterways are mostly used for a wide variety of leisure activities but light industrial uses are also returning. The engineering and planning issues associated with the maintenance, redevelopment and regeneration of waterways are sometimes complex and Archaeological Research Services Ltd are dedicated to uniting our wide range of professional expertise with sensitive management.

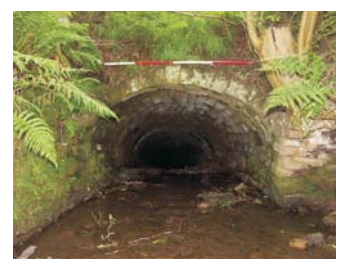
Archaeological Research Services Ltd has an established track record of working on rivers and the regeneration of historic canals, as well as in the creation of new waterway infrastructure. From consultancy, archival research and field survey to large-scale excavation, publication and publicity events, we have accumulated the experience to work closely with the various waterways organisations and interest groups to deliver successful projects including the construction of Britain's largest inland marina at Willington on the Trent and Mersey Canal.

Bugsworth Canal Basin:
As part of the restoration of this Scheduled Monument ARS Ltd undertook detailed survey and archival research into the Bugsworth Canal Basin, Derbyshire.



Archaeological Research Services Ltd

Web: www.archaeologicalresearchservices.com
Email: enquiries@archaeologicalresearchservices.com
Tel: 01629 814540



CHARITIES

Being committed to looking after our nation's heritage and making it intellectually accessible and enjoyable for all, Archaeological Research Services Ltd has worked in partnership with various charities since the Company was launched. Working with and alongside charities is therefore in our DNA and we are proud of our achievements and track record in adding value to the work of our charity partners. Recent projects have included working with the Wildlife Trusts and Groundwork Trust as well as with smaller charities and voluntary groups. Of particular note has been our work with Whirlow Hall Farm, an educational charity based on the edge of Sheffield which provides 11000 day visit places per year for schools, educational groups and vulnerable adults as well as being open at weekends to the general public. We have assisted Whirlow Hall Farm in surveying and recording their historic farm buildings and producing a conservation management plan, but the main outcome has been the discovery of a previously unknown Roman villa which is now being excavated by volunteer groups.

We regularly work with charities and voluntary groups to raise funds and obtain grants for heritage projects. This has included successful outcomes for many different organisations who have benefited from grants now totalling several million pounds. In many cases we work with our partner organisation in supplying the training, supervision and specialist skills and experience to undertake the work. Having worked closely with the third sector from the outset we are tuned into the needs and culture of charitable and voluntary organisations. We are always keen to hear from charities who may have an idea for a project, and you can be assured of helpful and willing professionals who can assist in realising your ambitions.

Whirlow Hall Farm:
explaining to a family
about the different
Roman objects being
discovered during
excavations on a villa



Archaeological Research Services Ltd

Web: www.archaeologicalresearchservices.com
Email: enquiries@archaeologicalresearchservices.com
Tel: 01629 814540



COMMUNITY ARCHAEOLOGY

Public interest in archaeology has rarely been as evident as it is today, testified by the popularity of history and archaeology documentaries and the wealth of community archaeology projects that are taking place across Britain. Community archaeology projects, whether driven by the voluntary sector or the planning process, provide an important opportunity to create sustainable heritage outcomes. These can take the form of site conservation, excavating and recording sites for posterity, building up skills, knowledge and education in local communities or adding to peoples' enjoyment of place and supporting the tourism industry. In our experience community archaeology projects have the potential to bond communities together in large numbers around a common goal, providing opportunities for all age ranges to work together.

Archaeological Research Services Ltd are proud to be one of the leading providers of community archaeology and heritage projects throughout the UK, with a track record of conceiving and leading projects that have been held up as a gold standard in the profession. We regularly develop partnerships with the voluntary, charitable and education sectors, as well as the commercial sector, to devise and assist in delivering projects important to them. We recently won, in conjunction with our community partners, 'Best Community Project 2010' at the British Archaeological Awards, and 'Best Research Project 2012' at the Current Archaeology Awards. Whether you want to develop a project, secure funding or find a contractor to deliver your project, ARS Ltd have a track-record that is second to none.

**Quarries and
Communities:**
Over 450 school
children took part in
test pitting for Stone
Age flint tools at a
quarry site in
Northumberland



Archaeological Research Services Ltd

Web: www.archaeologicalresearchservices.com
Email: enquiries@archaeologicalresearchservices.com
Tel: 01629 814540

